

Appendix B – CEJST Information

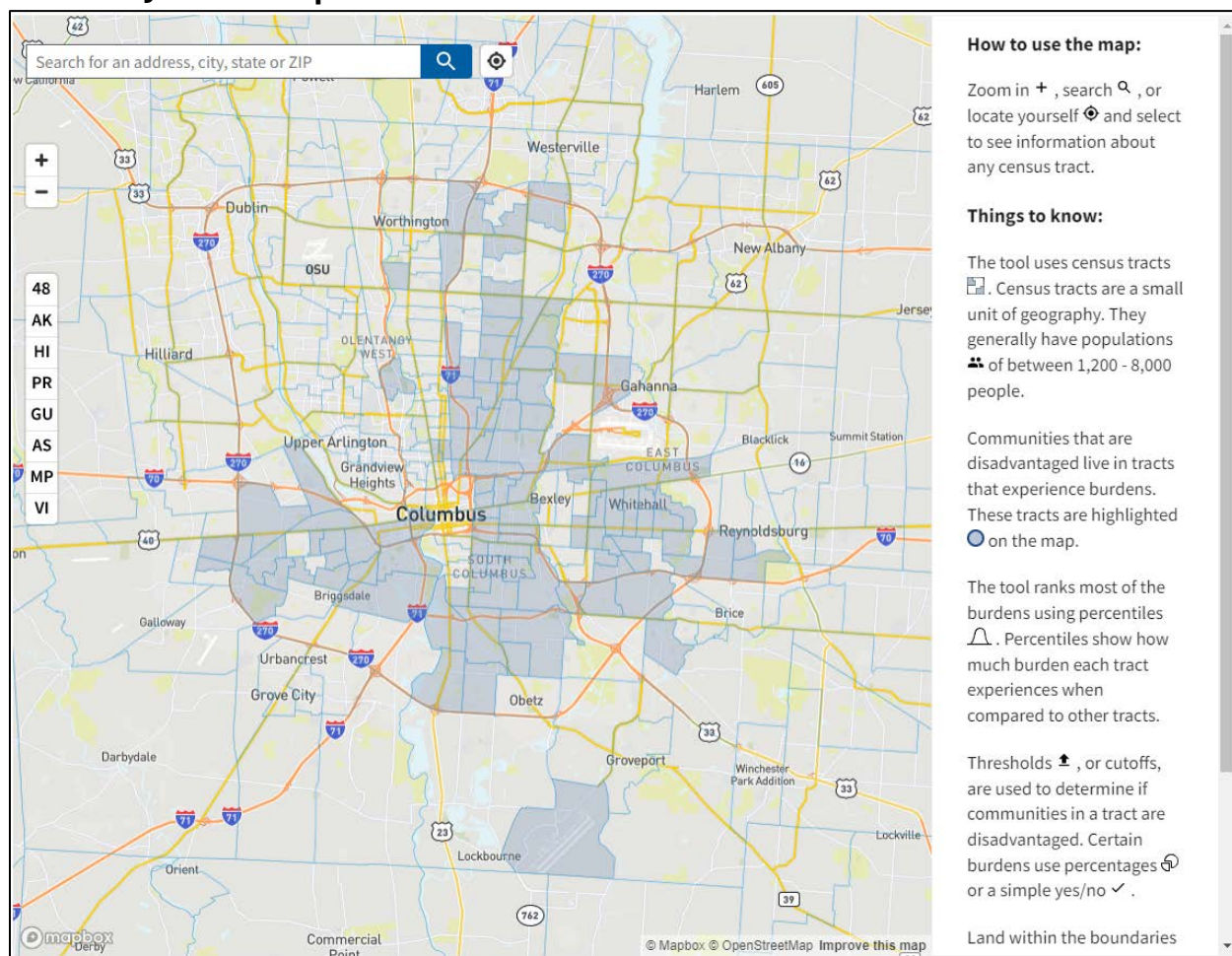
A. CEJST Data for Columbus

	Total CT's ¹	Total CEJST ^{2**}	Percentage
All service areas, citywide:	224	98	43.75%
Alum Creek Station Service Area	79	48	60.76%
Georgesville Station Service Area	65	18	27.69%
Morse Station Service Area	88	35	39.77%

¹ (a) The total number of census tracts within each geography is approximate because the corporate boundary does not always coincide with the census tract boundaries, and care has been taken to try and include only those census tracts that are more than just tangentially within the corporate limits; and (b) the districts overlap some census tracts, which is why the total number of census tracts citywide total is less than the total number of census tracts when adding the census tracts within each service area together.

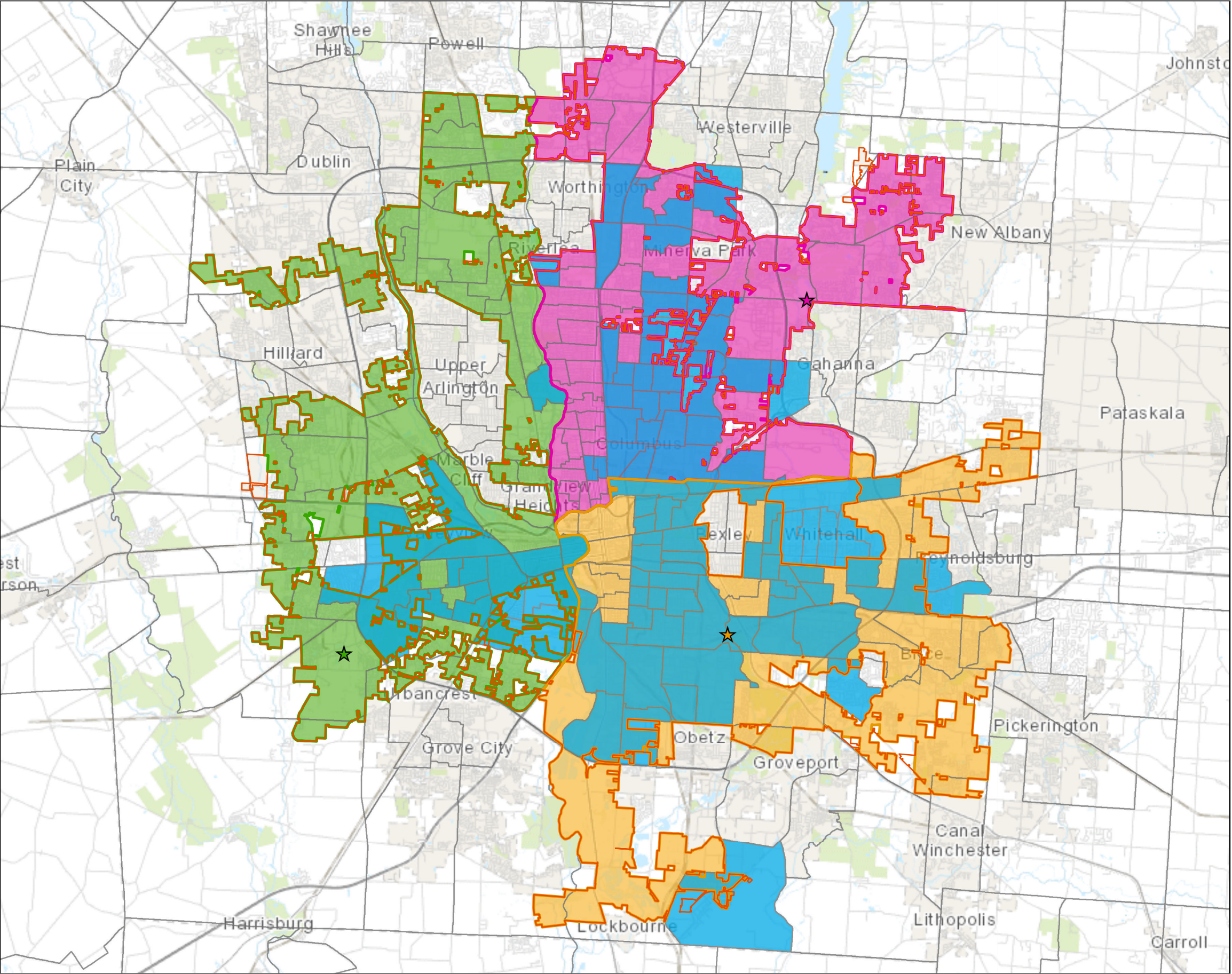
² Additional CEJUST mapping and documentation is provided in this appendix.

B. CEJST webmap³




³ Screen capture from <https://screeningtool.geoplatform.gov/en/#10.12/39.975/-82.9823>




Columbus CEJST Census Tracts: Refuse Collection Service Areas






Legend

 Columbus Corporate Boundary



Refuse Collection Stations

-  Alum Creek Dr Station
-  Georgesville Rd Station
-  Morse Rd Station

Refuse Collection Service Areas

-  Alum Creek Station Service Area
-  Georgesville Station Service Area
-  Morse Station Service Area

Climate and Economic Justice Screening Tool

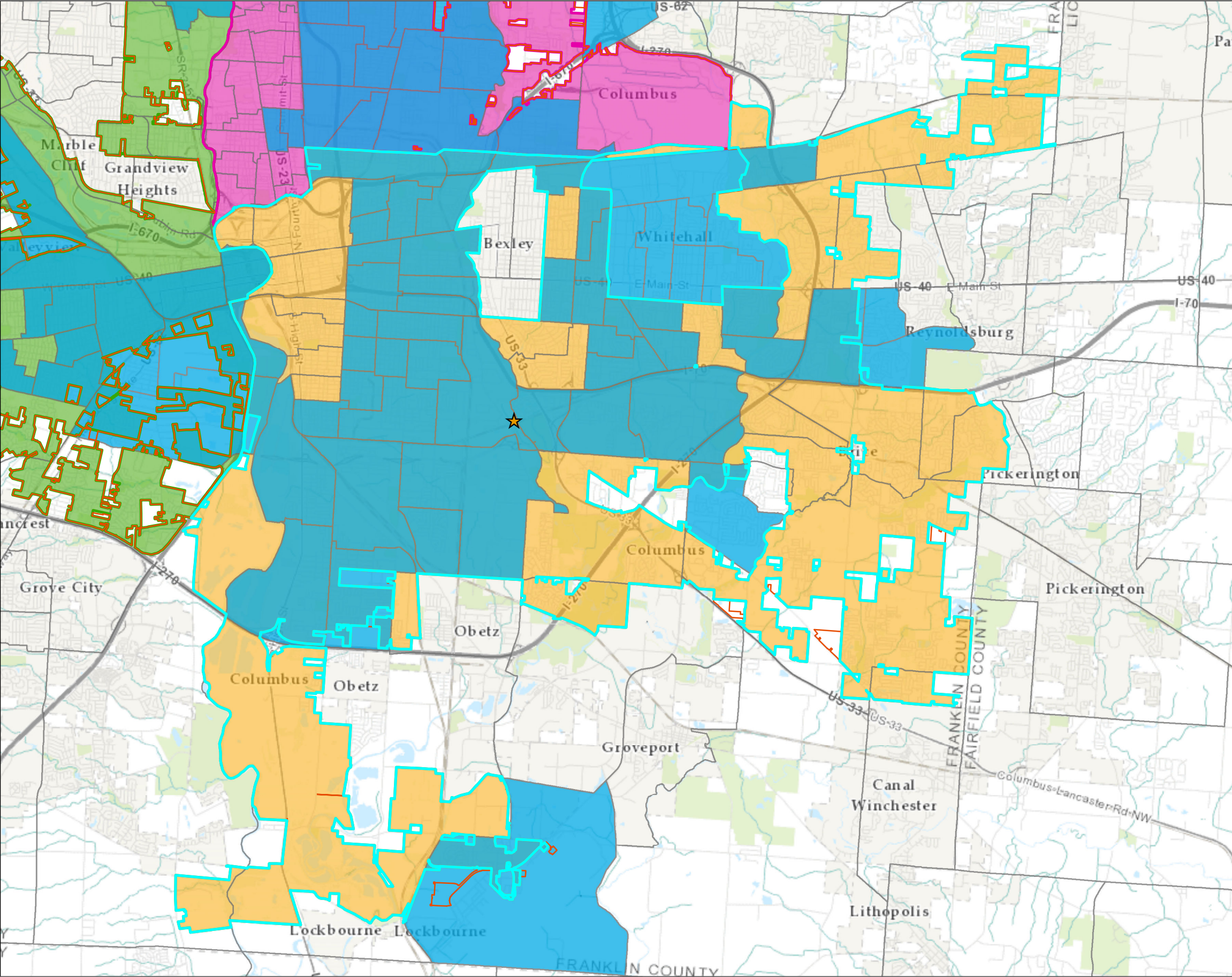
-  Not identified as disadvantaged by CEJST
-  Identified as disadvantaged by CEJST

Disclaimer: Distances are approximate. This map has been provided as reference material and does not constitute a legally binding document. Use at your own discretion.


THE CITY OF
COLUMBUS
ANDREW J. GINTHER, MAYOR

DEPARTMENT OF
PUBLIC SERVICE




Columbus CEJST Census Tracts: Alum Creek Station Service Areas






Legend

 Columbus Corporate Boundary



Refuse Collection Stations

-  Alum Creek Dr Station
-  Georgesville Rd Station
-  Morse Rd Station

Refuse Collection Service Areas

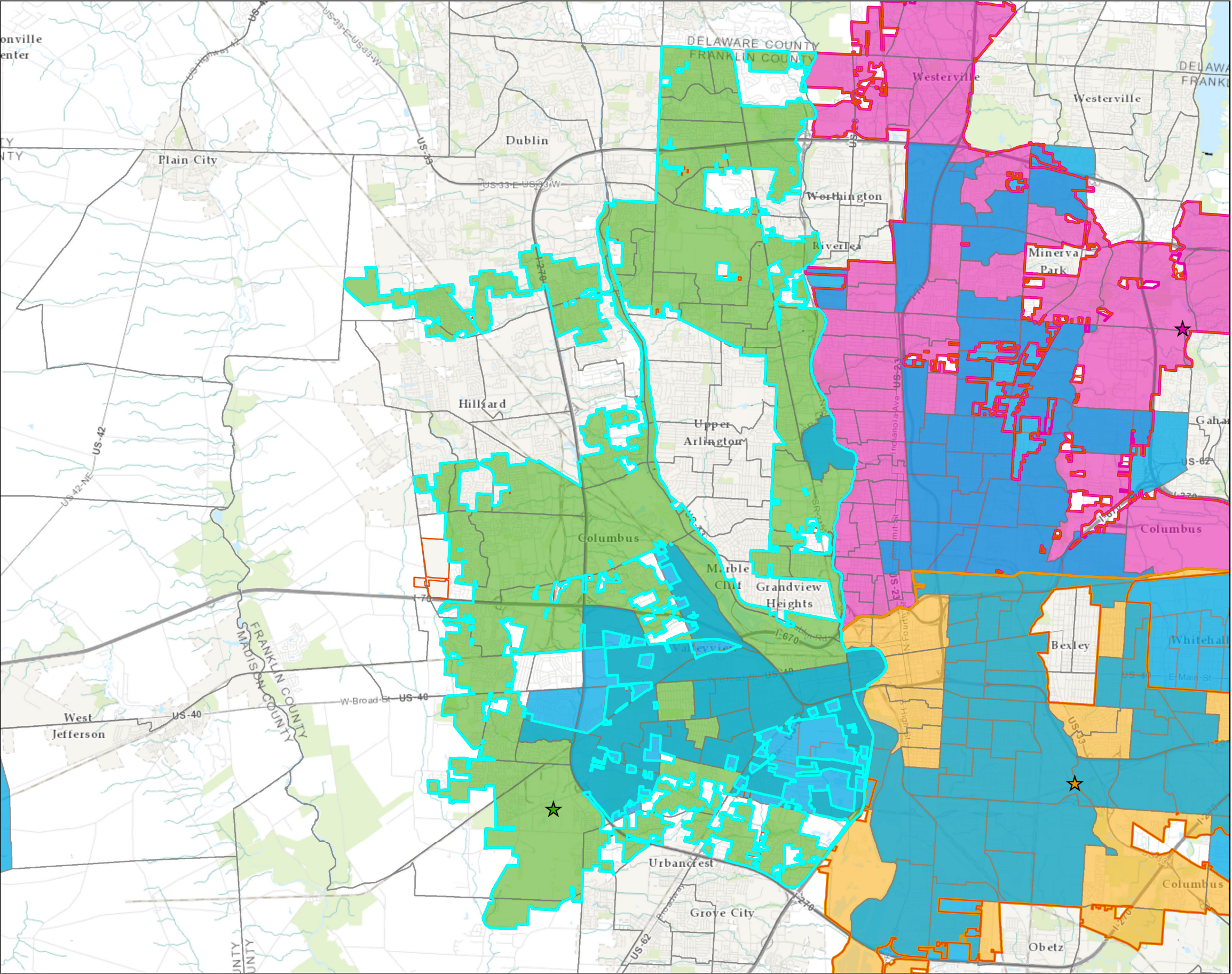
-  Alum Creek Station Service Area
-  Georgesville Station Service Area
-  Morse Station Service Area

Climate and Economic Justice Screening Tool


-  Not identified as disadvantaged by CEJST
-  Identified as disadvantaged by CEJST

Disclaimer: Distances are approximate. This map has been provided as reference material and does not constitute a legally binding document. Use at your own discretion.




Columbus CEJST Census Tracts: Georgesville Station Service Areas






Legend

 Columbus Corporate Boundary



Refuse Collection Stations

-  Alum Creek Dr Station
-  Georgesville Rd Station
-  Morse Rd Station

Refuse Collection Service Areas

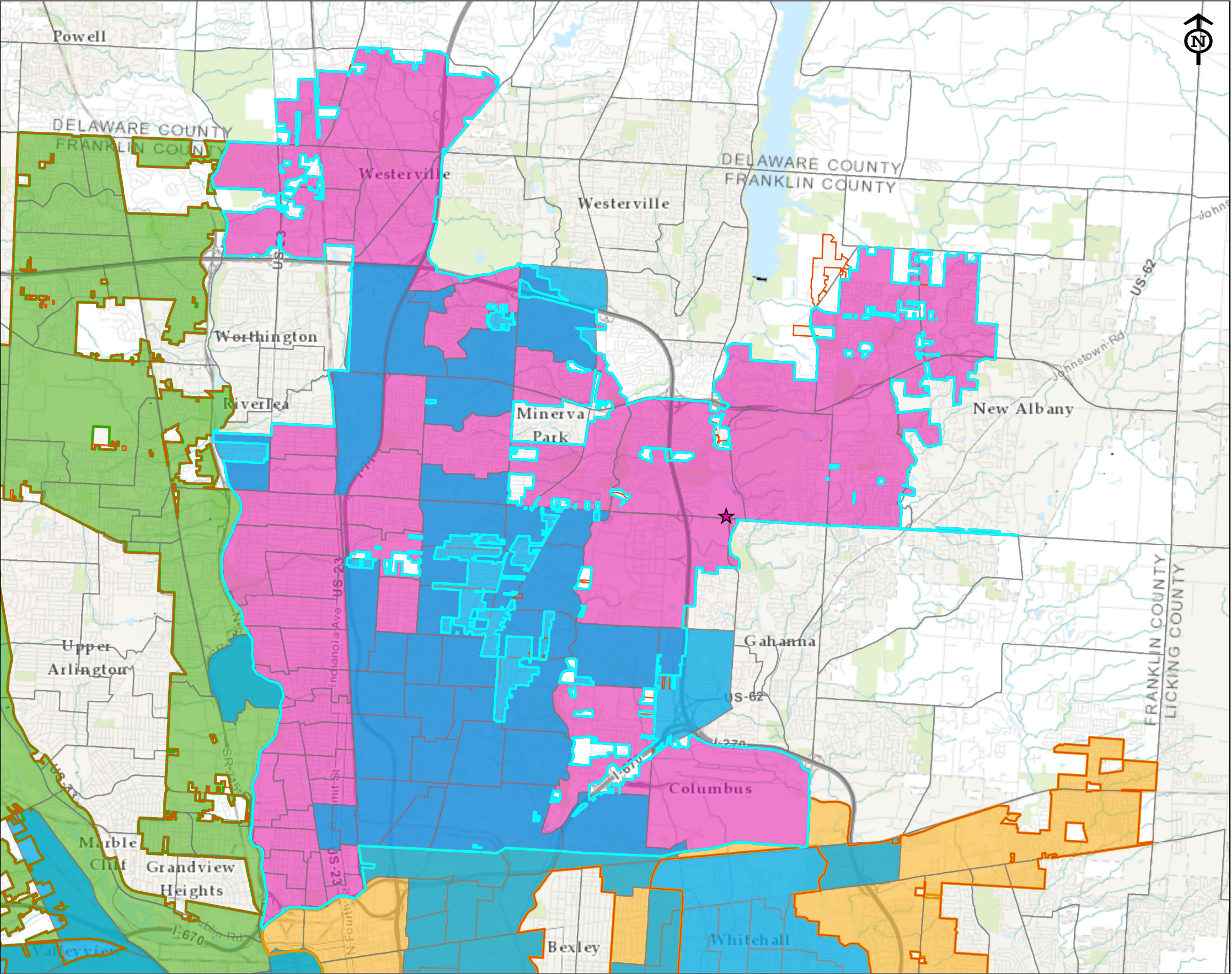
-  Alum Creek Station Service Area
-  Georgesville Station Service Area
-  Morse Station Service Area

Climate and Economic Justice Screening Tool

-  Not identified as disadvantaged by CEJST
-  Identified as disadvantaged by CEJST

Disclaimer: Distances are approximate. This map has been provided as reference material and does not constitute a legally binding document. Use at your own discretion.

Columbus CEJST Census Tracts: Morse Station Service Area



Legend

- Columbus Corporate Boundary
- Refuse Collection Stations**
 - Alum Creek Dr Station
 - Georgesville Rd Station
 - Morse Rd Station
- Refuse Collection Service Areas**
 - Alum Creek Station Service Area
 - Georgesville Station Service Area
 - Morse Station Service Area
- Climate and Economic Justice Screening Tool**
 - Not identified as disadvantaged by CEJST
 - Identified as disadvantaged by CEJST

Disclaimer: Distances are approximate. This map has been provided as reference material and does not constitute a legally binding document. Use at your own discretion.