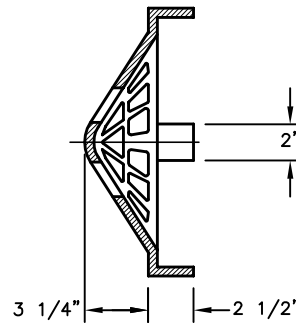
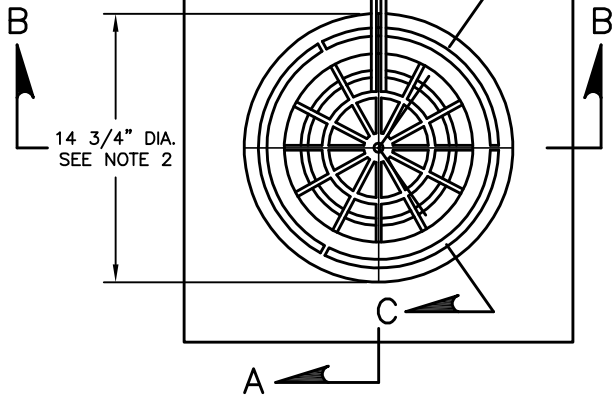


3/8" DIA. STAINLESS STEEL ANCHOR ROD 24" LONG BENT AROUND GRATE AS SHOWN & ANCHORED INTO THE CONCRETE CASING

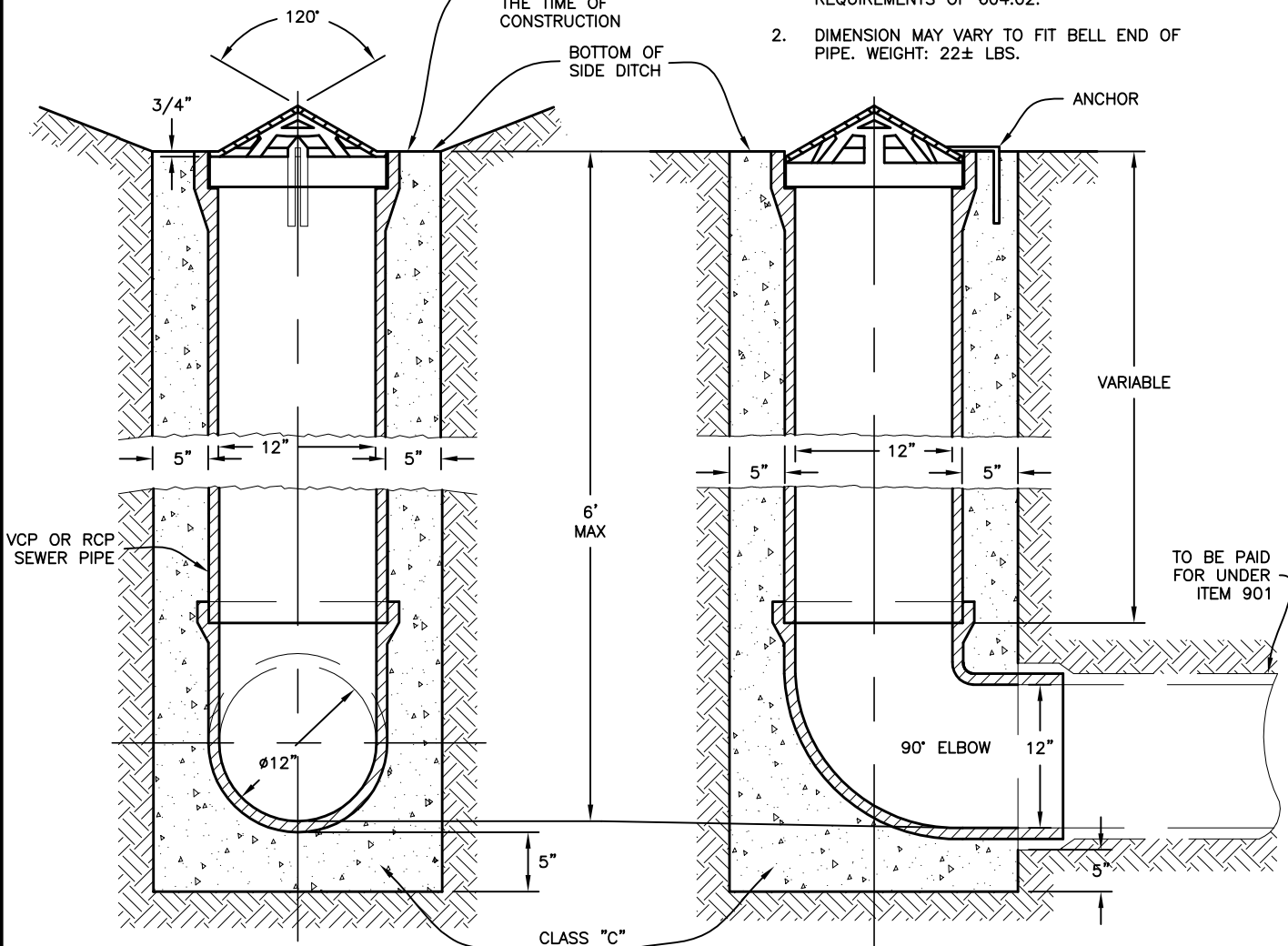


SECTION C-C

ELEVATION OF TOP OF DITCH INLET TO BE DETERMINED AT THE TIME OF CONSTRUCTION

NOTES:

- FRAMES, GRATES, AND COVERS SHALL MEET REQUIREMENTS OF 604.02.
- DIMENSION MAY VARY TO FIT BELL END OF PIPE. WEIGHT: 22± LBS.



SECTION B-B

SECTION A-A

CITY OF COLUMBUS, OHIO
DEPARTMENT OF PUBLIC UTILITIES
DIVISION OF SEWERAGE & DRAINAGE

CATCH BASIN
12" DIAMETER

STANDARD DRAWING
AA-S130

REVISED 9/12/22

SSES MANAGER

PAGE

1

1