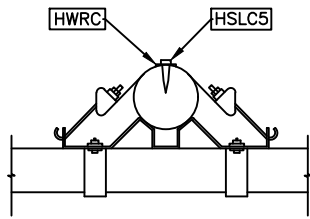
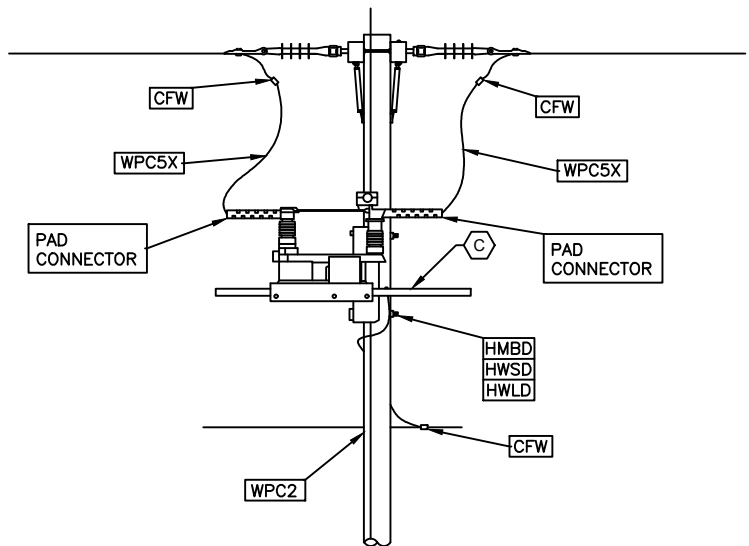


DETAIL 1
FRONT VIEW



SECTION A
POLE MOUNTING STRAP



DETAIL 2
SIDE VIEW

CODED NOTES:

- Ⓐ REFER TO TDMIS-7 FOR POLE GROUNDING DETAILS.
- Ⓑ EXTEND #4 COPPER GROUND TO GROUND CONNECTION ON SWITCH MOUNTING BRACKET ON ARM.
- Ⓒ FACTORY SUPPLIED CROSSARM MAY BE METAL, GROUND BASE TO GROUND WIRE.
- Ⓓ PROVIDE FINAL CONTACT ADJUSTMENTS AS REQUIRED TO ASSURE ALL CONTACTS OPEN AND CLOSE SIMULTANEOUSLY PER MANUFACTURE'S RECOMMENDATIONS.

COMPATIBLE UNIT: TDMIS-2741

TDMIS ID	MATERIAL	QTY	QTY	QTY	QTY
CFW	FIRED WEDGE CONNECTOR, MATERIAL AND SIZE AS REQUIRED	7			
WPC2	CONDUCTOR #4, COPPER, SOFT DRAWN, BARE (FEET)	15			
WPC5X	CONDUCTOR, 4/0 AWG, COPPER, 7 STRAND, WEATHERPROOF XLPE (FEET)	30			
S1	SWITCH, GROUP OPERATED AIR BREAK, 900 AMP, 25KV, HOOK STICK OPERATED	1			
HSLC5	1/2"x5" LAG SCREW, GALVANIZED	1			
HWRC	WASHER, ROUND, ZINC, 9/16" I.D.	1			
	COMPRESSION PAD CONNECTOR	6			
HMBD	BOLT, MACHINE, GALVANIZED, 5/8" O.D., LENGTH AS REQUIRED	2			
HWSD	WASHER, SQUARE, FLAT, GALVANIZED, 11/16" I.D.	2			
HWLD	WASHER, SPRING LOCK, DOUBLE COIL, GALVANIZED, 11/16" I.D.	2			