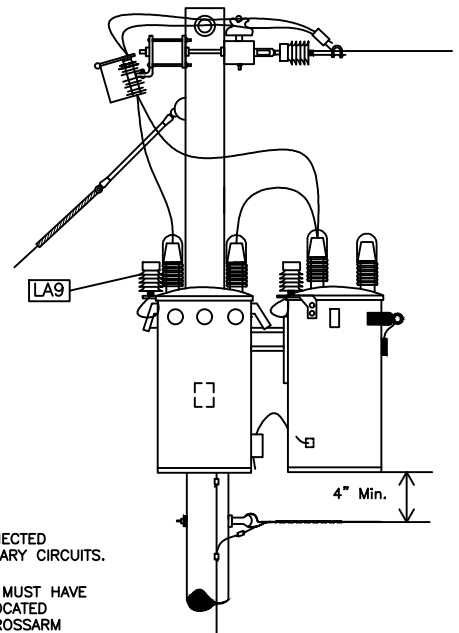
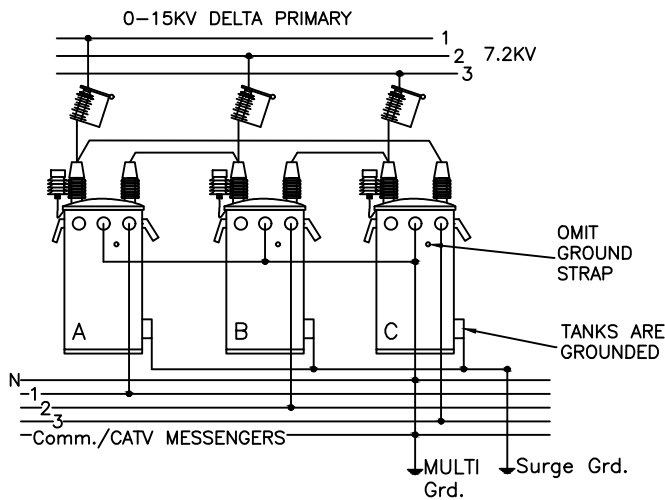


3 PHASE CROSSARM POLE TOP
FIGURE 1

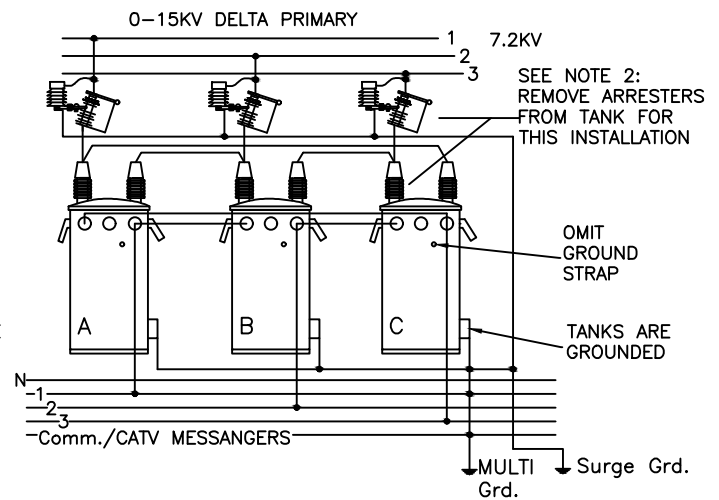


3 PHASE DEAD-END POLE TOP
FIGURE 2

- NOTES:
- ① SURGE ARRESTER GROUNDS ARE NOT INTERCONNECTED WITH ANY OTHER MULTIGROUNDS ON DELTA PRIMARY CIRCUITS.
 - ② FLOATING WYE-DELTA INSTALLATIONS (FIGURE 4) MUST HAVE ARRESTERS REMOVED FROM THE TANK AND RELOCATED AHEAD OF THE CUTOFF ONTO A BRACKET OR CROSSARM FOR PROTECTION OF THE ARRESTER FROM DAMAGING OVERVOLTAGES INDUCED DURING SWITCHING OPERATIONS (OPENING/RE-CLOSING OF ITS ASSOCIATED CUTOFF).



480Y/277 or 208Y/120V
WIRING DIAGRAM FIGURE 3



240V
WIRING DIAGRAM FIGURE 4

COMPATIBLE UNIT: TDMIS-805.

| TDMIS ID | MATERIAL | QTY | QTY | QTY | QTY |
|----------|--|-----|-----|-----|-----|
| T10H | SINGLE-PHASE, OVERHEAD, POLE-MOUNTED TRANSFORMER (14400/23940Y V OR 7200/12470V) | 3 | | | |
| BF33 | BRACKET, FIBERGLASS, THREE-PHASE, 36", TRIPLE POSITION | 1 | | | |
| CO1L | CUTOFF, POLYMER, 100 AMP, LOADBREAK | 3 | | | |
| LA9 | ARRESTER, SURGE, 9 KV, HEAVY DUTY | 3 | | | |
| CHLB1 | CLAMP, HOTLINE, BRONZE, #8 TO 2/0 MAIN, #8 TO 1/0 TAP | 3 | | | |
| WPC2 | WIRE, COPPER, BARE, 4 AWG, SOLID (FEET) | 15 | | | |
| HWP1 | PROTECTOR, WILDLIFE, STANDARD | 3 | | | |